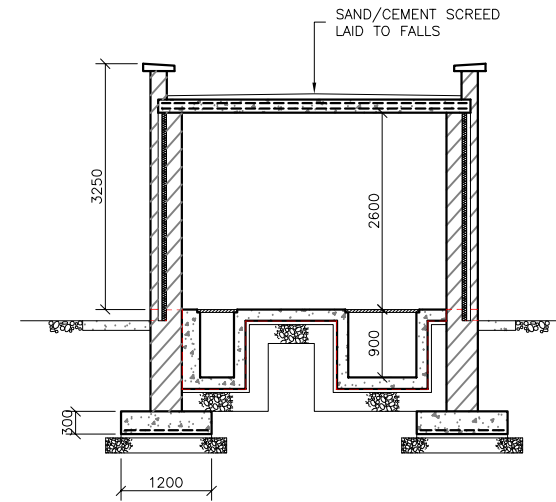
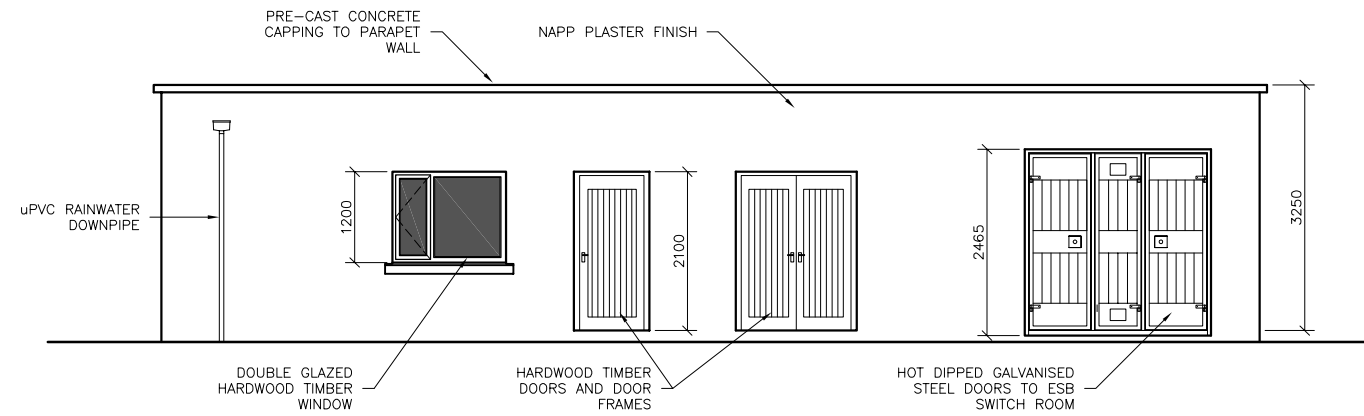


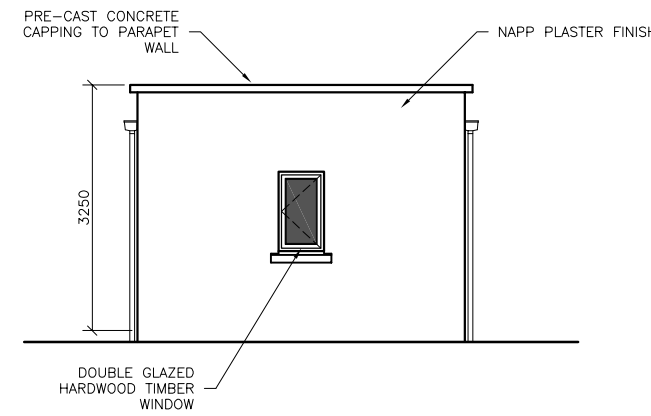
FLOOR PLAN



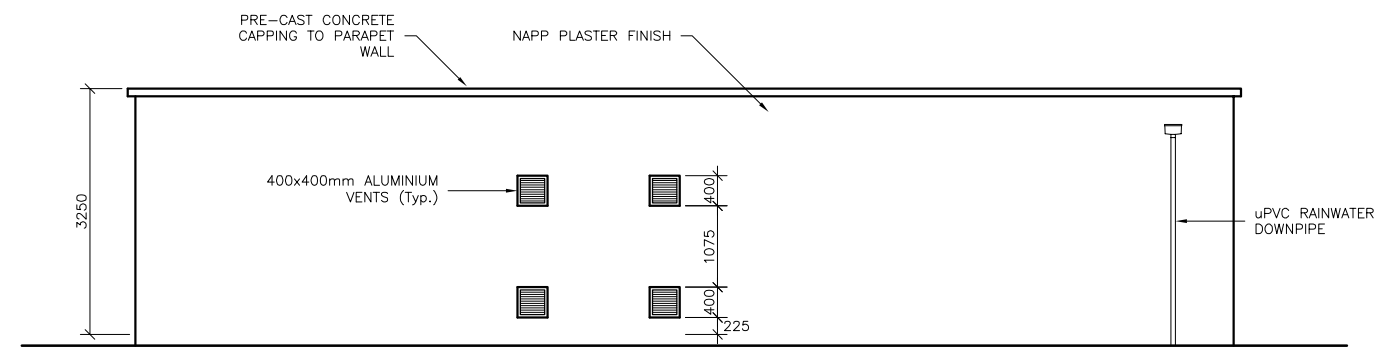
SECTION A-A



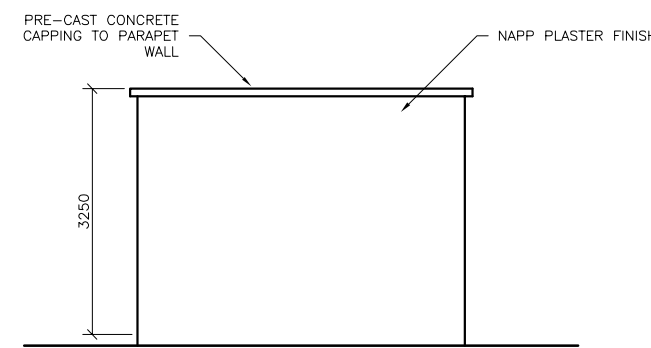
FRONT ELEVATION – Facing North



SIDE ELEVATION – Facing East



REAR ELEVATION – Facing South



SIDE ELEVATION – Facing West

NOTES:

- FOR DETAILS OF CONTROL BUILDING LOCATION, REFER TO SITE LAYOUT PLAN.
- ALL DIMENSIONS ARE IN MILLIMETRES, U.O.S.
- ALL WALLS TO BE OF CAVITY CONSTRUCTION WITH 100mm PLASTERED BLOCK WORK OUTER LEAF, 110mm CAVITY WITH 60mm INSULATION, 215mm CONCRETE BLOCK INNER LEAF WITH STAINLESS STEEL WALL TIES AT 900mm CENTRES HORIZONTALLY AND 450mm CENTRES VERTICALLY. EXTERNAL RENDER TO BE 3:1 SAND CEMENT SCUD COAT AND FLOAT AND FINISH COAT OF 1:2:3 SAND:CEMENT:LIME, TOTAL THICKNESS 25mm.
- FLOOR CONSTRUCTION
 - 150mm THICK GRADE 35N/mm² 20mm CONCRETE FLOOR SLAB REINFORCED WITH A393 FABRIC MESH, BOTTOM ON 1000 GAUGE VISQUEEN DPM ON 50mm LEANMIX BLINDING ON 250mm DEEP CONSOLIDATED HARD CORE.
 - SLAB TO RECEIVE POWER FLOAT FINISH AND SEALED WITH POLYBOND OR SIMILAR.
 - FFL TO BE MIN. 150mm ABOVE FGL.
- LOUVERED VENTS :- 400 SQ. ALUMINIUM LOUVERED VENTS.
- DOORS :- HARDWOOD DOORS & FRAMES.
- WINDOWS :- DOUBLE GLAZED, HARDWOOD WINDOWS.
- LINTELS :- ALL LINTELS TO BE PRE-CAST, PRE-STRESSED CONCRETE USED IN ACCORDANCE WITH MANUFACTURERS INSTRUCTIONS.
- FOOTPATH CONSTRUCTION :- CONCRETE TO GRADE 35N/mm² WITH A193 MESH REINFORCEMENT ON 50mm SAND BLINDING.
- DPC SYSTEM RUBEROID PERMABIT D.P.C. SYSTEM TO BE PROVIDED TO FULL WIDTH OF WALL AND LAPPED AS NECESSARY WITH D.P.M. AND TO BE MIN. 150mm ABOVE GROUND LEVEL. VERTICAL DPC'S TO BE INSERTED AT ALL JAMBS TO OPES WITH A STEPPED DPC TO BE CARRIED OVER ALL HEADS TO OPES AND FIXED TO MANUFACTURERS INSTRUCTIONS.
- ALL STEEL TO BE HOT DIPPED GALVANISED TO BS 729.
- ALL WORKS TO BE CARRIED OUT IN ACCORDANCE WITH THE CURRENT BUILDING REGULATIONS TECHNICAL GUIDANCE DOCUMENTS.

0	PLANNING ISSUE	TM	TC	FOM	ML
REV	REVISION	REV.BY	A	B	C
		APPROVED			
		Bridge Street Centre Portlaoise Co. Laois Ireland T:(00353)(0)57 866 5400 www.fingleton.ie			
Project AVIATION FUEL PIPELINE		On Behalf of: INDEPENDENT PIPELINE Co. Ltd.			
		APPROVALS A ENGINEER B PROJECT MANAGER C PROJECT DIRECTOR			
DUBLIN PORT – PIPELINE INLET STATION CONTROL ROOM FLOOR PLAN, ELEVATIONS AND SECTION					
Scale	1:100/A3	Status	DRAFT	Drawing Number	0362/D/04/G/0005
				Sheet	1 of 1